



PRODUCT CATALOGUE

INDIRECT FIRED HEATERS



FVP-400



FVO-400

MODEL	FVO-400 Oil	FVN-400 Natural Gas	FVP-400 Propane
Heat Capacity	390,000 btuh	390,000 btuh	390,000 btuh
Fuel Tank Capacity	42 US gallons	External n/a	External n/a
Operating Time/ Fuel Consumption	14 hours 2.75 gal/hr	380 CFH	18.5 lbs/hr
L x W x H	70"x 29"x 52"	70"x 29"x 47"	70"x 29"x 47"
Heat Exchanger	16 gauge 304 Stainless Steel	16 gauge 304 Stainless Steel	16 gauge 304 Stainless Steel
Fan Motor	3/4 HP@1,725 rpm 2,500 CFM	3/4 HP@1,725 rpm 2,500 CFM	3/4 HP@1,725 rpm 2,500 CFM
Ignition	Direct Spark Ignition	Direct Spark Ignition	Direct Spark Ignition
Nozzle Size/ Gas Pressure	2.00 x 60B @ 170 PSI	2.0" W.C	3.2" W.C.
Air Outlet (optional)	Two 12" diameter One 16" diameter	Two 12" diameter One 16" diameter	Two 12" diameter One 16" diameter
Wheels	Two 16" diameter Pneumatic wheels	Two 16" diameter Pneumatic wheels	Two 16" diameter Pneumatic wheels
Power Requirement	115V/60Hz/1Ph/15Amp	115V/60Hz/1Ph/15Amp	115V/60Hz/1Ph/15Amp
Approvals	cETLus	cETLus	cETLus
Weight	450 lbs	365 lbs	365 lbs

DEPENDABLE HEAT WHEREVER YOU NEED IT

170° F - 180° F outlet temperature rise

Includes proven Riello burner technology

Optional remote thermostat available

ETL approved for use in the United States and Canada

FVO-200 has a stackable frame for easy storage



INDIRECT FIRED HEATERS



FVO-200



FVP-200

MODEL	FVO-200 Oil	FVN-200 Natural Gas	FVP-200 Propane
Heat Capacity	200,000 btuh	200,000 btuh	200,000 btuh
Fuel Tank Capacity	23 US gallons	External N/A	External N/A
Operating Time/ Fuel Consumption	15 hours 1.50 Gal/hr	190 CFH	9.25 lbs/hr
L x W x H	51.5" x 27" x 43.5"	53.5" x 27" x 39.5"	53.5" x 27" x 39.5"
Heat Exchanger	18 gauge 304 Stainless Steel	18 gauge 304 Stainless Steel	18 gauge 304 Stainless Steel
Fan Motor	1/2 HP@1,725 RPM 1,500 CFM	1/2 HP@1,725 RPM 1,500 CFM	1/2 HP@ 1,725 RPM 1,500 CFM
Ignition	Direct Spark Igniter	Direct Spark Igniter	Direct Spark Igniter
Nozzle Size/ Gas Pressure	1.25 x 60B @ 145PSI	3.5" W.C.	3.5" W.C.
Air Outlet	One 12" diameter	One 12" diameter	One 12" diameter
Wheels	Two 12" pneumatic/ Two 6" swivel Lockable casters	Two 12" pneumatic/ Two 6" swivel Lockable casters	Two 12" pneumatic/ Two 6" swivel Lockable casters
Power Requirement	115V/15 Amp	115V/15 Amp	115V/15 Amp
Approvals	cETLus	cETLus	cETLus
Weight	330 lbs	280 lbs	280 lbs

OPTIONS

For all FV-Series



12" x 12 ft Hitex Ducting



Remote Thermostat Control
with 25 ft Cord



INDIRECT FIRED HEATERS



MODEL	FVO-750	FVNP-750
	OIL	DUAL FUEL - LP/NG
Heat Capacity	750,000 btuh	750,000 btuh
Temperature Rise	130° F	130° F
Heat Exchanger	16g 304 S/S	16g 304 S/S
Fan Motor	7.5 hp	7.5 hp
	7000 cfm	7000 cfm
Fan Control	VFD standard	VFD standard
Ignition	Direct Spark Ignition	Direct Spark Ignition
Nozzle Size / Gas Pressure	4.50x60W @ 160 PSI	Propane - 1.5" W.C. Natural Gas - 2.2" W.C.
Air Outlet	Two 16" diameter	Two 16" diameter
Air Inlet	Two 16" diameter	Two 16" diameter
Power Requirements	1 ph / 208-230v	1 ph / 208-230v
	or 3 ph / 208-230v	or 3 ph / 208-230v
Amperage Draw	18 amp @ 1 ph	18 amp @ 1 ph
	14 amp @ 3 ph	14 amp @ 3 ph
Approvals	cETLus	cETLus
L x W x H	98" x 36" x 61"	98" x 36" x 61"
Weight	1390 lbs	1390 lbs

INDIRECT FIRED HEATERS



Riello burners used exclusively for both oil and LP / NP models. "Plug and Play" burner assembly kit sold separately to convert heater from oil to LP / NG.

Oil units include "Tiger loop" system which allows for single fuel line supply and de-aeration of fuel line providing optimum burner performance.

Equipped with a VFD control allows for "soft start", regulating the fan speed at start up and shut down. It also provides overload motor protection and voltage management

STANDARD EQUIPMENT:

Both 1 phase 208-230v and 3 phase 208-230v power supply connections are included on all models. Waterproof, emergency disconnect provided.

Recessed control panel protects the indicator lights, switches and disconnects, indicator lights show proper burner operations and possible burner lockout.

The reverse inclined blower, powered by the 7.5hp TEFC motor, allows for outlet ducting over 100ft. This pressurized design provides even airflow from both duct outlets.

Proven Flagro heat exchanger design includes fully welded, 16g 304 series stainless steel



POWERFUL, FLEXIBLE AND DEPENDABLE HEAT FOR ANY JOB

The FV-750 indirect fired heater provides 130° F. temperature rise at 7000cfm. Return air duct inlet allows for recirculation of warm inside air and/or pressurization of building as desired. Single phase or three phase power supply operates both burner and fan motor.

Includes integrated fork lift pockets and lift points.
Easy access to burner, fuel lines and electrical controls.
Approved for indoor and outdoor installations.



16" x 25ft Hitex Outlet Ducting
16" x 25ft Ventflex Inlet Ducting



Remote Thermostat Control
c/w 25ft Cord

SELF CONTAINED HEATER TRAILERS



FVO-1000TR

PORTABLE HEAT AND POWER ANYWHERE YOU NEED IT

Includes Flagro FVOHC-400 Indirect Fired Heating Units
Can be equipped with 4 x 12" or 2 x 16" Duct Outlets

2 x 3500 lbs Dual Axle, 4 x 15" Galvanized Rims with Radial Tires
Solid Steel Welded Channel Frame and Floor
Electric Emergency Second Axle Brakes Included
Safety Chains, Ball or Pintle Hitch Included
Duct Storage Cabinet - Standard
Full Fuel Containment Available

FVO-400TRL Includes 4 x 1000W Light Tower



FVO-400TRL

SELF CONTAINED HEATER TRAILERS

ENGINES:	Yanmar or Kubota Liquid Cooled Diesel
	Electric Start / Glow Plugs Battery charging alternator Heavy Duty Radiator and Air Cleaner
HEATERS:	
FVO-1000TR	2 x FVOHC-400 Flagro Indirect Fired Heaters
FVO-400TRL	1 x FVOHC-400 Flagro Indirect Fired Heaters
FUEL CONSUMPTION:	
FVO-1000TR	Engine - 1.08 GPH at full load Heaters - 400,000 btuh x 2 @ 2.75 GPH 44 hour run time before refuelling
FVO-400TRL	Engine - 1.25 GPH at full load Heater - 400,000 btuh @ 2.75 GPH 38 hour run time before refuelling
DUCT CABINET:	Standard Duct Cabinet included on all trailers
GENERATORS:	Stamford Newage Generator
	Single Phase - 120 V Instrument Panel includes keyed ignition and hour meter
FVO-1000TR	8 kw @ 1800 rpm (14 HP)
FVO-400TRL	12 kw @ 1800 rpm (19.7 HP)
FUEL TANKS:	
FVO-1000TR	1100 litres / 299 gallons Polyethylene construction Fuel sight gauge - standard 4" fuel inlet nozzle mounted at the side of the trailer for ground access refuelling
FVO-400TRL	544 litres / 136 gallons Steel construction Fuel sight gauge - standard 4" fuel inlet nozzle including anti-splash insert
DIMENSIONS:	
FVO-1000TR	Length - 16 ft, Width - 7 ft-4in, Height - 6 ft Weight - 4000 lbs (empty)
FVO-400TRL	Length - 13 ft-4 in, Width - 7 ft-4 in, Height - 6 ft Weight - 4290 lbs (empty)
LIGHT TOWER:	
FVO-400TRL	4 x 1000 W lights 28 ft - 3 stage mast Light bulb storage cabinet - standard
APPROVALS:	CSA & ESA approved DOT approved trailer



HEATER APPLICATIONS



DUCTABLE DIRECT FIRED HEATERS



THC-175DF & THC-85

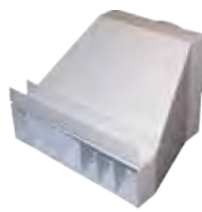


THC-355CDF

MODEL	THC-85	THC-175DF	THC-355CDF
Propane	THC-85P	THC-175DF - dual fuel	THC-355CDF - dual fuel
Natural Gas	THC-85N	THC-175DF - dual fuel	THC-355CDF - dual fuel
Ignition System	Direct Spark	Direct Spark	Direct Spark
Heat Capacity	85,000 btuh	175,000 btuh	330,000 btuh
Heated Air Output	450 CFM	1,200 CFM	2,600 CFM
Power Requirement	115V/60Hz/1ph/15amp	115V/60Hz/1ph/15amp	115V/60Hz/1ph/15amp
Thermostat	20ft Cord for remote location	20ft Cord for remote location	20ft Cord for remote location
Shipping Weight	135 lbs	193 lbs	390 lbs
Net Weight	122 lbs	164 lbs	345 lbs
L x W x H	30" x 16" x 22"	30.6" x 18.25" x 31.125"	42" x 46" x 32.5"



**THCP-DD and
THCP-WD12**



**THCP-DD
THCP-DD18**



**THCP-WD12
THCP-WD18**



**THCP-HD85
THCP-HD175**

IDEAL FOR TENT AND CONSTRUCTION HEATING APPLICATIONS

Thermostatically controlled for a consistent, comfortable environment
 Operates as both a fresh air circulator or a heater at the touch of a switch
 Ducting options allow for heat to be directed to specific areas
 Quiet, efficient, easy to set-up, rugged design

ELECTRIC HEATERS



FLE-60



**FLE-60 with 20"
Duct and Adaptor**

HEAT SETTING	BTUH	CFM	TEMPERATURE RISE	NOISE RATING
60kw	205,000 btuh	3300 cfm	110°F/43°C	67 db
40kw	137,000 btuh	2800 cfm	85°F/30°C	63 db
20kw	68,000 btuh	2450 cfm	50°F/10°C	63 db
Fan Only		3900 cfm		71 db

ELECTRICAL SUPPLY	480 volt or 575 volt models available
STATIC PRESSURE	1/2" W.C.
MOTOR/BLOWER	1 1/2 HP - Belt Drive
DUAL AIR INLET	16" x 16" inlet (20" ductable return)
OUTLET	18" x 13" outlet (20" ductable supply)
L x W x H	32" x 48" x 25.5"
WEIGHT	290 lbs
OPTIONS: FLE-HDG20	20" x 25ft Hitex Outlet Ducting
FLE-HDV20	20" x 25ft Ventflex Inlet Ducting
FLE-DA60S20	Inlet Ducting Adapter - 2 req/unit
FLE-DA60F20	Outlet Ducting Adapter
FV-THB	Thermostat c/w 25 ft cord

QUIET, FLEXIBLE AND DEPENDABLE ELECTRIC HEAT FOR ANY JOB

Permanent cleanable inlet filters prevent particulates at jobsite from contaminating heating element and controls

Fan speed inverter control provides optimum temperature rise by adjusting blower output at each heat setting

Convenient colour coded cam lock power connections for easy installation

Simplified control panel design allows for easy operations at 60kw, 40kw & 20kw inputs

Air flow and high temperature indicator lights incorporated on recessed control panel

Optional remote thermostat c/w 25ft cord

**FLE-150**

HEAT SETTING	BTUH	CFM	TEMPERATURE RISE	NOISE RAITING
150 kw	512,000 btuh	6300 cfm	120° F / 49 deg C	83 db
90 kw	307,000 btuh	5800 cfm	88° F / 31 deg C	81 db
60 kw	205,000 btuh	4600 cfm	56° F / 13 deg C	76 db
Fan only		6800 cfm		85 db

ELECTRICAL SUPPLY	480 volt or 575 volt models available
STATIC PRESSURE	1/2" W.C.
MOTOR / BLOWER	7-1/2 hp - Direct Drive
AIR INLET	20" ductable return
OUTLET	20" ductable supply
L X W X H	66" x 36" x 40"
WEIGHT	560 lbs
APPROVAL	CSA & ESA approved for indoor and outdoor use

QUIET, FLEXIBLE AND DEPENDABLE ELECTRIC HEAT FOR ANY JOB

Fan speed inverter control provides optimum temperature rise by adjusting blower output at each heat setting.

Convenient colour coded cam lock power connections for easy installation.

Simplified control panel design allows for easy operations at multiple inputs.

Air flow and high temperature indicator lights incorporated on recessed control panel.

Optional remote thermostat c/w 25 ft cord

DIRECT FIRED CONSTRUCTION HEATERS



F-150

Adjustable heat from 50,000 to 150,000 btuh



F-375

Adjustable heat from 220,000 to 375,000 btuh

MODEL	F-150	F-375
Fuel	Vapor Propane	Vapor Propane
Heat Capacity	150,000 btuh	375,000 btuh
Max	50,000 btuh	220,000 btuh
Min		
Manifold Pressure	2-1/4 to 20 PSI	7 to 20 PSI
Hose Length	20ft is standard	20ft is standard
Regulator With POL	Adjustable to 20 PSI max.	Adjustable to 20 PSI max.
Approval	UL of Canada Listed	UL of Canada Listed
Weight	32 lbs	65 lbs
L x W x H	30" x 11.25" x 14"	42" x 17" x 22"
Air Outlet	8" Diameter	13" Diameter
Fuel Consumption	2.3 to 6.9 lbs/hr	10.1 to 17.3 lbs/hr
Ignition	Manual	Manual
Optional Fan	N/A	800 CFM fan assembly (120V)



2001-S2
2 cylinder manifold



2001-S3
3 cylinder manifold

DEPENDABLE HEAT WHENEVER YOU NEED IT

Engineered for simple operation and minimal servicing

Light and highly portable

Stackable for easy transportation and storage

Designed to operate without a fan or electricity

Temporary heat for use during construction and maintenance



ALL THE HEAT YOU NEED

Thermostatically controlled
 Filterless design
 Heavy duty frame under 50 pounds
 Recessed controls to eliminate damage
 Stackable for easy storage and transportation
 Improved maintenance accessibility
 Your choice of natural gas or propane



FRHR - 100N



MODEL	FRHR-100N (Natural Gas)	FRHR-100P (Propane)
Heat Capacity	Natural Gas 90,000 btuh	Propane 90,000 btuh
Manifold Pressure	Natural Gas 7.0" W.C.	Propane 10.0" W.C.
Approval	cWHus - Warnock Hersey	cWHus - Warnock Hersey
Weight	47 lbs	47lbs
L x W x H	16" x 16" x 35"	16" x 16" x 35"
Ignition	Manual/Standing Pilot	Manual/Standing Pilot
Standard	Thermostat Control	Thermostat Control
Inlet	3/8" FNPT	3/8" FNPT



FRHP-101

Hose Assembly



MAN-E1

Single Manifold



MAN-E2

Dual Manifold

DUAL FUEL CONSTRUCTION HEATERS



F-400T



F-1500T

MODEL	F-400T	F-1000T	F-1500T
Fuel	Propane or Natural Gas	Propane or Natural Gas	Propane or Natural Gas
BTU/hr	400,000 btuh	1,000,000 btuh	1,500,000 btuh
Low Fire BTU/hr	N/A	N/A	650,000 btuh
Inlet Pressure			
Propane	11" W.C. MAX	11" W.C. MAX	11" W.C. MAX
Natural Gas	4.0" W.C. MIN	10" W.C. MIN	10" W.C. MIN
Power Requirement	115V/60Hz/1PH/15Amp	115V/60Hz/1PH/20Amp	115V/60Hz/1PH/20Amp
Fan Motor	1/3 HP	1 HP	1 HP
Air Circulation	2,000 CFM	7,000 CFM	7,000 CFM
Ignition	Direct Spark Control	Direct Spark Control	Direct Spark Control
Thermostat Control	Yes	Yes	Yes
L x W x H	48" x 22" x 24"	61" x 29" x 38"	61" x 29" x 38"
Air Outlet	15" Diameter	26" Diameter	26" Diameter
Weight	90 lbs	356 lbs	360 lbs

REQUIRED EQUIPMENT FOR HEATER INSTALLATIONS

Recommended For Model No.	Second Stage Regulator*	Typical Hose Assembly
F-400T	B42R0.75 (3/4" NPT)	S52180-12 3/4" x 15ft Hose Assembly
F-1000T	B42R1.25 (1-1/4" NPT)	S54180-20 1 1/4" x 15ft Hose Assembly
F-1500T	B31R1.25 (1-1/4" NPT)	S54180-20 1 1/4" x 15ft Hose Assembly

Note: *Regulator sizing assumes job site inlet pressure of 2-10 PSI.

**Custom hose assemblies are available upon request.



Ventless regulator
available on request





AMF-50



AM-140

MODEL	AMF-50	AM-140
Air Circulation	5,000 CFM	14,000 CFM
Fan Blade	20" Diameter	42" Diameter
Dimensions	23" W x 25" H x 16" D	24" W x 48" H x 24" D
Weight	69 lbs	200 lbs
Power Supply	1/2 HP - 120V/15 Amp	3/4 HP - 120V/15 Amp
Application	Construction, Industrial, Agricultural	Construction, Industrial, Agricultural

REDUCE YOUR HEATING COSTS BY INCREASING AIR CIRCULATION

Year round job-site circulation

Durable construction

Ideal for construction sites, factories, mills, barns, warehouses. etc.

Explosion proof motor option available

PROPANE TORCH KITS



FT15-250

PRE-ASSEMBLED TORCH, HOSE & REGULATOR KITS

MODEL	Description
FT15-100	FT-100, 15ft hose and regulator (25,000 to 80,000 BTUs)
FT15-250	FT-250, 15ft hose and regulator (90,000 to 300,000 BTUs)
FT15-500	FT-500, 15ft hose and regulator (110,000 to 410,000 BTUs)

Other hose lengths available

TORCHES EQUIPPED WITH 100% SAFETY SHUT-OFF SYSTEM

MODEL	Description
FT15-250SV	Kit complete with FT-250SV Torch, 15ft hose and regulator
FT15-500SV	Kit complete with FT-500SV Torch, 15ft hose and regulator
FT-250SV	Torch only (90,000 to 300,000 BTUs)
FT-500SV	Torch only (110,000 to 410,000 BTUs)



FT-250SV

INSTANT HEAT WHEN YOU NEED IT

Provides instant heat for many applications
Heavy duty design and construction

Adjustable heat to suit your many needs:

- asphalt melting
- stress relieving
- drying roofs
- thawing/ice melting
- weed burning
- preheating for welding



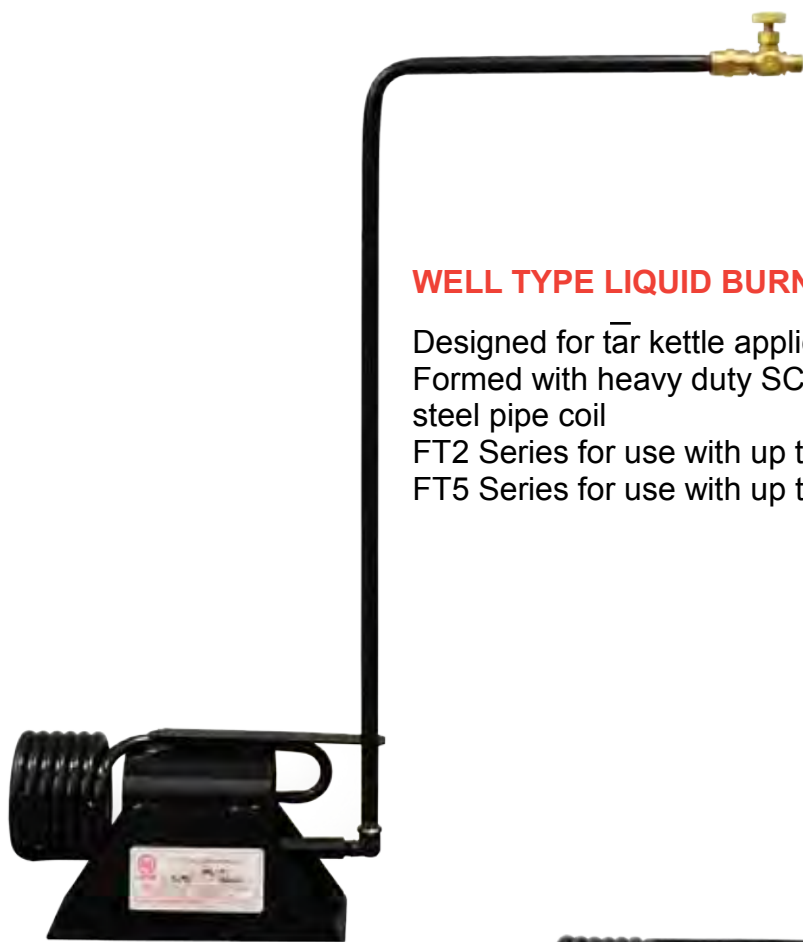
1230VK1 Fitted
Regulator Kit



34180-4
15ft Hose
Assembly



LIQUID TORCHES AND BURNERS



WELL TYPE LIQUID BURNERS

Designed for tar kettle applications
Formed with heavy duty SCH 80
steel pipe coil
FT2 Series for use with up to 4" flues
FT5 Series for use with up to 6" flues

MODEL	BTU
FT2-3	300,000
FT2-5	500,000
FT2-7	700,000
FT2-9	900,000
FT5-10	1,000,000
FT5-15	1,500,000
FT5-20	2,000,000



STRAIGHT LIQUID BURNERS

Formed with heavy duty SCH 80 steel pipe coil
Used as asphalt melters, crop dryers and high
pressure water heaters

MODEL	BTU
FT1-3	300,000
FT1-5	500,000
FT1-7	700,000
FT1-9	900,000
FT4-10	1,000,000
FT4-15	1,500,000
FT4-20	2,000,000



LIQUID TORCHES

Ideal torch where high outlet is required
Allows full use of fuel in propane cylinder
FT6 Series provided with 2 ft handle
FT8 Series provided with 4 ft handle

MODEL	BTU
FT6-3	300,000
FT6-5	500,000
FT6-7	700,000
FT6-9	900,000
FT8-10	1,000,000
FT8-15	1,500,000
FT8-20	2,000,000

NORTH AMERICAN MADE





Flagro Industries Limited has been manufacturing propane, natural gas, and oil fired temporary heating equipment in St. Catharines, Ontario, Canada for over 30 years. Founded by Bruce Watson in 1978, Flagro remains a privately owned company offering a wide spectrum of gas and oil related products to both business and consumers from their office and plant near the U.S. border.

The product line has expanded many times over the years to include a comprehensive array of propane, natural gas, and oil fired temporary heaters, liquid and vapour propane burners and torches, air movers and roofing and road maintenance equipment.



Flagro manufactures the Silver Giant commercial gas grill product line for the hospitality and rental industries. Flagro also designs and manufactures specialty equipment and burner systems to specific customer applications. Every product manufactured by Flagro is tested by qualified technicians before it is shipped from the plant to ensure that it meets applicable regulatory and safety standards.

MINIMUM ORDER	No order is too small.
SPECIAL ORDERS	Any item considered as 'special' (ie. custom hose assembly) is not subject to return.
FREIGHT	Flagro ships daily, using several of the common carriers & couriers. If you have a preference, please advise us at the time you place your order. All shipments are FOB St. Catharines, ON unless otherwise agreed upon.
RETURNS	All returns require prior approval and an RGA #. To ensure proper handling of your return and credit, please obtain an RGA # from our sales staff.
TERMS	Net 30 days, unless otherwise agreed upon.



Telephone 905-685-4243 Fax 1-877-685-0113
www.flagro.ca



Flagro Industries Limited
26 Benfield Drive, St. Catharines, Ontario, Canada L2S 3V5
905 · 685 · 4243

www.flagro.ca